



## EXHIBITING RATES FORM

### EXHIBITING RATES PER SQ.M. – BARE AREA<sup>(1)</sup>

From 16 to 64 sq.m	From 65 to 128 sq.m	Over 128 sq.m
<b>€ 150.00</b> On the entire surface	<b>€ 135.00</b> On the entire surface	<b>€ 125.00</b> On the entire surface

### EXHIBITING AREA RATES PER SQ.M<sup>(1)</sup> – 16 or 32 SQ.M.

<b>TYPE A4</b>	<b>€ 235.00</b>
<b>TYPE G</b>	<b>€ 248.00</b>
<b>TYPE F</b>	<b>€ 274,00</b>

#### Other items:

#### Registration fee

**€ 850,00**

**(mandatory for each exhibitor)** The Registration fee includes: insurance as specified in Chap. III Art.1, exhibitors badges in line with the space purchased, trade visitor tickets in line with the space purchased, inclusion in the online catalogue, two car park permits, Wi-Fi connection, lead scanner.

The possibility of announcing to everyone, via the Web site, new products being presented at the expo and any events on exhibitors' stands. The news, which will be seen by everyone, must be announced by accessing your reserved area.

Security extra services and music royalties <sup>(2)</sup>	<b>€ 1,95/mq</b>
Online Catalogue entry – represented company or Brand each	<b>€ 200,00</b>
Hosted companies fee (in case of more companies inside one booth) + Registration Fee	<b>€ 750,00</b>

VAT must be added to these figures, if due

### INVITATION TICKETS SOLD TOGETHER WITH REGISTRATION FEE AND SQUARE METRES CONFIRMED

	Sq.m	Trade visitor Tickets
All exhibitors have a right to receive trade visitor ticket according to the sq.m purchased, as follows:	<b>up to 64</b>	<b>100</b>
	<b>from 65 to 128</b>	<b>200</b>
	<b>over 128</b>	<b>300</b>

- (1) **Bare area** rate includes area only, Registration Fee and possible further items must be added. **Turnkey rate** includes fitting, furnishing, carpet, power supply (1 Kw every 16 sq.m until maximum 4 Kw).
- (2) Implementation of increasing safety requirements by the public authorities contribution (metal detectors, extra cost for international VISAs increasing control obligations, more security staff and devices as metal detectors during the exhibition) and music royalties for broadcasting.

Other services available: furnishing and fitting rent, cleaning, translators and hostess staff, loading and unloading items, audio-visual equipment renting etc. These and more other services can be booked after signing the exhibiting proposal.

For further information please visit the website: [www.mirtechexpo.com](http://www.mirtechexpo.com)



**MIR**  
**MULTIMEDIA**  
**INTEGRATION**  
**EXPO**

The Future of AudioVisual  
 and Entertainment Technology

**12–14.04.26**

RIMINI  
 EXPO CENTRE

## ADVERTISING SOLUTIONS FOR MIR – MULTIMEDIA INTEGRATION EXPO 2026

Dear Exhibitor,

We have pleasure in drawing your attention to some advertising opportunities to enforce your visibility as exhibitor at **MIR – MULTIMEDIA INTEGRATION EXPO 2026**.

DESCRIPTION	PRICE LIST
<input type="checkbox"/> 4 COLOR COMPANY LOGO ON VISITORS GUIDE PLAN	€ 1.800
<input type="checkbox"/> BANNER IN THE VISITORS GUIDE PLAN	€ 1.200
<input type="checkbox"/> ADVERTISING ON THE BACK OF VISITORS GUIDE PLAN	€ 3.500
<b>WEBSITE BANNER</b>	
<input type="checkbox"/> Home Page 300 x 100	€ 600
<input type="checkbox"/> Section Visitors 200 x 200	€ 1.000
<input type="checkbox"/> Home Page 300 x 250	€ 1.200
<input type="checkbox"/> INTERNAL STANDS WITH DOUBLE-SIDES BANNERS	€ 810
<input type="checkbox"/> TOTEM INDOOR POOL	€ 5.200
<input type="checkbox"/> GLASS WINDOWS IN PAVILION	€ 1.500
<input type="checkbox"/> GLASS WINDOWS ENTRANCE	€ 2.000
<input type="checkbox"/> REVOLVING DOOR BRANDING	€ 9.000
<input type="checkbox"/> BRANDING OF CONFERENCE ROOMS STAIRS	€ 5.000

**VAT must be added to these figures, if due**

**PLEASE NOTE:** The above solutions are just part of a broader range of offers that can be found on the website:

<http://en.mirtechexpo.com/exhibitors/advertising>

MULTIMEDIA INTEGRATION EXPO Team are available to examine any other requests not listed in the sales brochure and can also design new solutions tailored to your visibility needs.

Date \_\_\_\_\_

Stamp and signature of the legal representative



**MIR**  
**MULTIMEDIA**  
**INTEGRATION**  
**EXPO**

The Future of AudioVisual  
and Entertainment Technology

**12-14.04.26**

RIMINI  
EXPO CENTRE

### IMPORTANT DEADLINES:

#### REGISTRATION PROCEDURE:

**IMPORTANT: sent a copy of the application via e-mail [expo@iegexpo.it](mailto:expo@iegexpo.it)**  
(For details see Chap. I Art. 2 in Rules and Regulations)

#### BALANCE DEADLINE

**02 MARCH 2026** - Deadline for total balance payment (Chap. II Art. 3 of General Rules & Regulations).

<b>WITHDRAWAL RULES</b>	<b>BY 05 JANUARY 2026</b>	<i>If the written cancellation reaches the Organizer no later than <b>05 JANUARY 2026</b>, the penalty will be equal to an amount corresponding to the registration fee</i>
	<b>From 06 JANUARY 2026 till 06 MARCH 2026</b>	<i>If the written cancellation reaches the Organizer from <b>06 JANUARY TILL 06 MARCH 2026</b>, the penalty will be equal to an amount corresponding to the deposit as determined in the signed exhibiting proposal</i>
	<b>from 07 MARCH 2026</b>	<i>if the written cancellation reaches the Organizer from the date of <b>07 MARCH 2026</b>, penalty will be equal to an amount corresponding to the entire balance due as determined in the signed exhibiting proposal</i>

#### FOR FURTHER INFORMATION:

	SECTOR	TEAM	TEL. +39	EMAIL
Info for exhibitors, exhibiting space sale, advertising spaces in exhibition pavilions, web advertising, catalogue advertising sale	EXHIBITION MANAGER	Romina Magnani	0541 744 468	<a href="mailto:romina.magnani@iegexpo.it">romina.magnani@iegexpo.it</a>
	SALES OFFICE	Roberta Di Bonito Lucrezia Bologna	0541 744 816 0541 744 466	<a href="mailto:roberta.dibonito@iegexpo.it">roberta.dibonito@iegexpo.it</a> <a href="mailto:lucrezia.bologna@iegexpo.it">lucrezia.bologna@iegexpo.it</a>

### WARNING! NOTICES TO EXHIBITING COMPANIES

We hereby inform you that some companies, including "International Fairs Directory", "Mulpor Company Srl," "Oceandatalinks "," Fortune Business Intelligence group inc - fortunebig ", based in different parts of the world and with constantly changing company names, are used to send our exhibiting companies forms in which they request to correct the data of the companies themselves, for the publication of advertisements, in online magazines, improperly using the trademarks of our events, or propose the sale of databases of names of buyers complete with company names, names of internal contacts, their contacts Email, website, addresses, telephone and fax. The companies of the aforementioned type **HAVE NOT BEEN AUTHORIZED BY US** to use our name or the brands connected to us. Therefore, an arbitrary and illegitimate use of the distinctive signs of others is evident, in order to create misunderstandings in the recipients of the aforementioned communications. It is also understood **that Italian Exhibition Group Spa has not communicated or transferred any data of its buyers to the companies that propose the sale of databases of our buyers.** In the event that you receive forms or proposals for the sales of database, also by e-mail, from the companies as specified above, we invite you to pay **MAXIMUM ATTENTION**, taking into account the above.



**MIR**  
**MULTIMEDIA**  
**INTEGRATION**  
**EXPO**

The Future of AudioVisual  
and Entertainment Technology

**12-14.04.26**

RIMINI  
EXPO CENTRE

#### A4 STAND TYPE

**16 SMQ – SIZE 4X4**

##### SET UP

VARNISHED WOOD WALLS H 290 CM  
RED CARPET

- 1 STORAGE ROOM 100X100 CM
- 1 RECTANGULAR TABLE 160X80XH 75 CM
- 3 CHAIRS
- 1 STOOL
- 1 RECEPTION DESK 100X40XH 100 CM
- 1 WASTE BIN
- 1 COAT HANGER

##### ELECTRICAL SYSTEM

- 1 ELECTRICAL BOARD
  - 1 SOCKET 220 V
  - 3 LAMPS
- IN YOUR AREA IS INCLUDED 1KW ELECTRICAL SUPPLY (220 V) WHICH IS ENOUGH FOR STANDARD ELECTRICAL SYSTEM.

##### STANDARD GRAPHIC

STANDARD GRAPHIC 180XH 40 CM SUPPORT SIZE  
BLACK WRITTEN ON WHITE SUPPORT

##### OPEN FRONT: 1



##### OPEN FRONTS: 2



**€ 4.641,20**

Registration fee is included.

#### SUPPLY GENERAL CONDITIONS

The exhibitor is accountable for the hired materials until the time of giving them back; he engages himself in covering every eventual burden deriving from the improper use of such material.



**MIR**  
**MULTIMEDIA**  
**INTEGRATION**  
**EXPO**

The Future of AudioVisual  
and Entertainment Technology

**12-14.04.26**

RIMINI  
EXPO CENTRE

#### A4 STAND TYPE

**32 SMQ – SIZE 8X4**

#### SET UP

VARNISHED WOOD WALLS H 290 CM  
RED CARPET

- 1 STORAGE ROOM 200X100 CM
- 2 RECTANGULAR TABLE 160X80XH 75 CM
- 6 CHAIRS
- 2 STOOL
- 2 RECEPTION DESK 100X40XH 100 CM
- 1 WASTE BIN
- 1 COAT HANGER

#### ELECTRICAL SYSTEM

- 1 ELECTRICAL BOARD
  - 2 SOCKET 220 V
  - 6 LAMPS
- IN YOUR AREA ARE INCLUDED 2KW ELECTRICAL SUPPLY (220 V)  
WHICH IS ENOUGH FOR STANDARD ELECTRICAL SYSTEM.

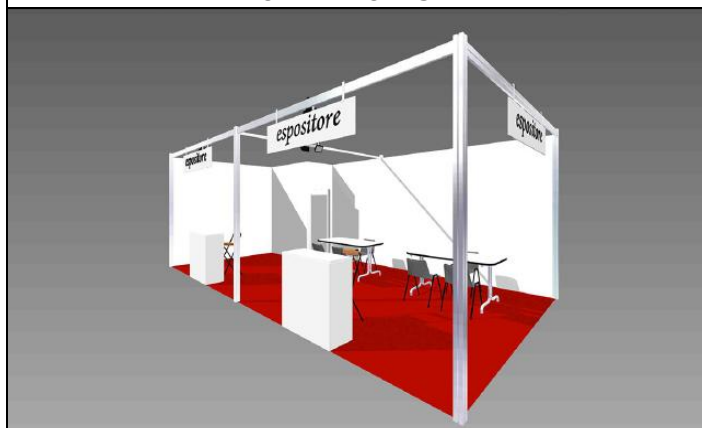
#### STANDARD GRAPHIC

STANDARD GRAPHIC 180XH 40 CM SUPPORT SIZE  
BLACK WRITTEN ON WHITE SUPPORT

#### OPEN FRONT: 1



#### OPEN FRONTS: 2



**€ 8.432,40**

Registration fee is included.

#### SUPPLY GENERAL CONDITIONS

The exhibitor is accountable for the hired materials until the time of giving them back; he engages himself in covering every eventual burden deriving from the improper use of such material.



**MIR**  
**MULTIMEDIA**  
**INTEGRATION**  
**EXPO**

The Future of AudioVisual  
and Entertainment Technology

**12-14.04.26**

RIMINI  
EXPO CENTRE

### G STAND TYPE

**16 SMQ – SIZE 4X4**

#### SET UP

VARNISHED WOOD WALLS H 290 CM  
GREY CARPET

- 1 STORAGE ROOM 100X100 CM
- 1 RECTANGULAR TABLE 160X80XH 75 CM
- 3 CHAIRS
- 1 STOOL
- 1 RECEPTION DESK 100X40XH 100 CM
- 1 WASTE BIN
- 1 COAT HANGER

#### ELECTRICAL SYSTEM

- 1 ELECTRICAL BOARD
  - 1 SOCKET 220 V
  - 3 LAMPS
- IN YOUR AREA IS INCLUDED 1KW ELECTRICAL SUPPLY (220 V) WHICH IS ENOUGH FOR STANDARD ELECTRICAL SYSTEM.

#### STANDARD GRAPHIC

STANDARD GRAPHIC 180XH 40 CM SUPPORT SIZE  
BLACK WRITTEN ON WHITE SUPPORT

#### OPEN FRONT: 1



#### OPEN FRONTS: 2



**€ 4.849,40**

Registration fee is included.

#### SUPPLY GENERAL CONDITIONS

The exhibitor is accountable for the hired materials until the time of giving them back; he engages himself in covering every eventual burden deriving from the improper use of such material.



**MIR  
MULTIMEDIA  
INTEGRATION  
EXPO**

**The Future of AudioVisual  
and Entertainment Technology**

**12-14.04.26**

**RIMINI  
EXPO CENTRE**

## **G STAND TYPE**

**32 SMQ – SIZE 8X4**

### **SET UP**

VARNISHED WOOD WALLS H 290 CM  
GREY CARPET

1 STORAGE ROOM 200X100 CM  
2 RECTANGULAR TABLE 160X80XH 75 CM  
6 CHAIRS  
2 STOOL  
2 RECEPTION DESK 100X40XH 100 CM  
1 WASTE BIN  
1 COAT HANGER

### **ELECTRICAL SYSTEM**

1 ELECTRICAL BOARD  
2 SOCKET 220 V  
6 LAMPS  
IN YOUR AREA ARE INCLUDED 2KW ELECTRICAL SUPPLY  
(220 V) WHICH IS ENOUGH FOR STANDARD ELECTRICAL  
SYSTEM.

### **STANDARD GRAPHIC**

STANDARD GRAPHIC 180XH 40 CM SUPPORT SIZE  
BLACK WRITTEN ON WHITE SUPPORT

### **OPEN FRONT: 1**



### **OPEN FRONTS: 2**



**€ 8.848,40**

**Registration fee is included.**

### **SUPPLY GENERAL CONDITIONS**

The exhibitor is accountable for the hired materials until the time of giving them back; he engages himself in covering every eventual burden deriving from the improper use of such material.





**MIR**  
**MULTIMEDIA**  
**INTEGRATION**  
**EXPO**

The Future of AudioVisual  
and Entertainment Technology

**12-14.04.26**

RIMINI  
EXPO CENTRE

### F STAND TYPE

**16 SMQ – SIZE 4X4**

#### SET UP

VARNISHED WOOD WALLS H 290 CM  
WOOD STAVES STRUCTURE  
RED CARPET

1 STORAGE ROOM 100X100 CM  
1 RECTANGULAR TABLE 160X80XH 75 CM  
3 CHAIRS  
1 STOOL  
1 RECEPTION DESK 100X40XH 100 CM  
1 WASTE BIN  
1 COAT HANGER

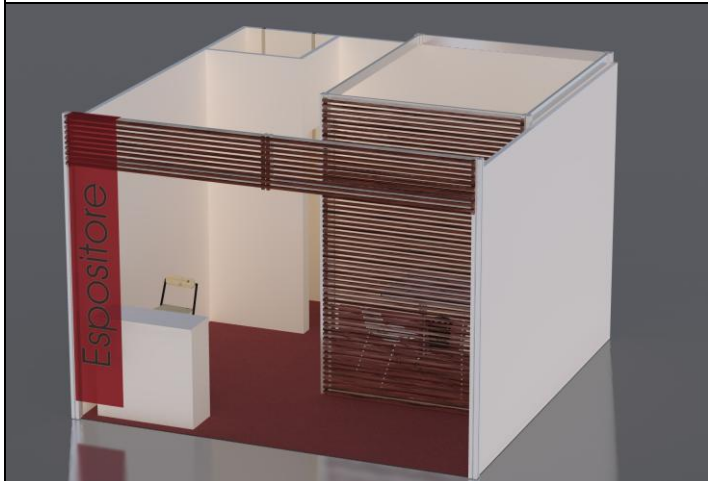
#### ELECTRICAL SYSTEM

1 ELECTRICAL BOARD  
1 SOCKET 220 V  
3 LAMPS  
IN YOUR AREA IS INCLUDED 1KW ELECTRICAL SUPPLY (220 V) WHICH IS  
ENOUGH FOR STANDARD ELECTRICAL SYSTEM.

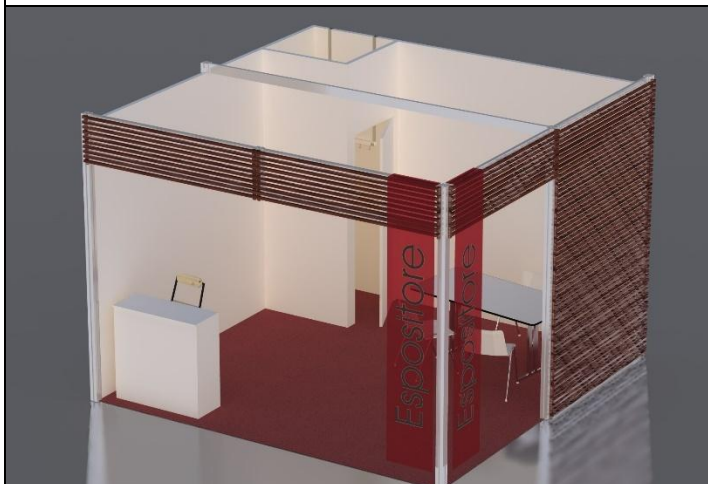
#### STANDARD GRAPHIC

PRINTED FLAG WITH COMPANY NAME 50XH 290 CM

#### OPEN FRONT: 1



#### OPEN FRONTS: 2



**€ 5.265,20**


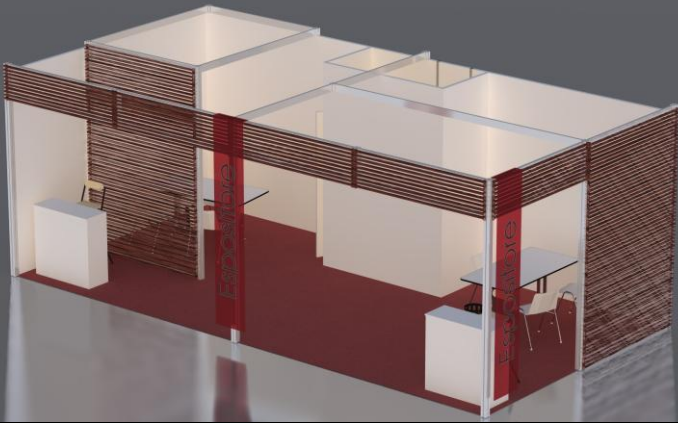
Registration fee is included.

#### SUPPLY GENERAL CONDITIONS

The exhibitor is accountable for the hired materials until the time of giving them back; he engages himself in covering every eventual burden deriving from the improper use of such material.





<b>F STAND TYPE</b>	
<b>32 SMQ – SIZE 8X4</b>	
<p><b>SET UP</b>  VARNISHED WOOD WALLS H 290 CM  WOOD STAVES STRUCTURE  RED CARPET</p> <p>1 STORAGE ROOM 200X100 CM  2 RECTANGULAR TABLE 160X80XH 75 CM  6 CHAIRS  2 STOOL  2 RECEPTION DESK 100X40XH 100 CM  1 WASTE BIN  1 COAT HANGER</p> <p><b>ELECTRICAL SYSTEM</b>  1 ELECTRICAL BOARD  2 SOCKET 220 V  6 LAMPS  IN YOUR AREA ARE INCLUDED 2KW ELECTRICAL SUPPLY (220 V)  WHICH IS ENOUGH FOR STANDARD ELECTRICAL SYSTEM.</p> <p><b>STANDARD GRAPHIC</b>  PRINTED FLAG WHIT COMPANY NAME 50XH 290 CM</p>	<p><b>OPEN FRONT: 1</b></p> 
	<p><b>OPEN FRONTS: 2</b></p> 
<p><b>€ 9.680,40</b></p> <p><b>Registration fee is included.</b></p>	

**SUPPLY GENERAL CONDITIONS**

The exhibitor is accountable for the hired materials until the time of giving them back; he engages himself in covering every eventual burden deriving from the improper use of such material.