



MULTIMEDIA INTEGRATION EXPO

# 23 > 25

## march 2025

### Rimini Expo Centre

### EXHIBITING RATES FORM

#### EXHIBITING RATES PER SQ.M. – BARE AREA<sup>(1)</sup>

From 16 to 64 sq.m	From 65 to 128 sq.m	Over 128 sq.m
<b>€ 146.00</b> On the entire surface	<b>€ 130.00</b> On the entire surface	<b>€ 120.00</b> On the entire surface

#### EXHIBITING AREA RATES PER SQ.M<sup>(1)</sup> – 16 or 32 SQ.M.

<b>TYPE A4</b>	<b>€ 232.00</b>
<b>TYPE G</b>	<b>€ 246.00</b>
<b>TYPE F</b>	<b>€ 272,00</b>

#### Other items:

#### Registration fee

€ 750,00

**(mandatory for each exhibitor)** The Registration fee includes: insurance as specified in Chap. III Art.1, exhibitors badges in line with the space purchased, trade visitor tickets in line with the space purchased, inclusion in the online catalogue, local advertising tax, two car park permits, Wi-Fi connection. The possibility of announcing to everyone, via the Web site, new products being presented at the expo and any events on exhibitors' stands. The news, which will be seen by everyone, must be announced by accessing your reserved area.

Security extra services and music royalties <sup>(2)</sup>	€ 1,95/mq
--	-----------

Online Catalogue entry – represented company or Brand each	€ 200,00
--	----------

Hosted companies fee (in case of more companies inside one booth) + Registration Fee	€ 750,00
--	----------

VAT must be added to these figures, if due

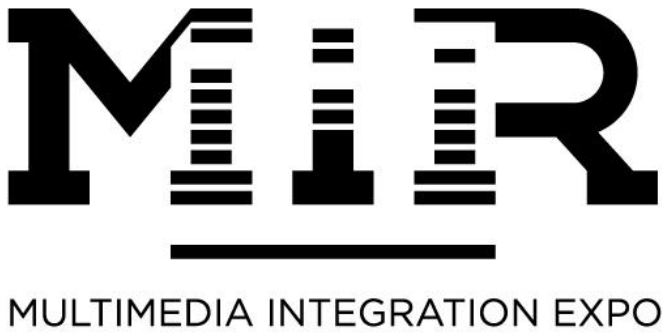
#### INVITATION TICKETS SOLD TOGETHER WITH REGISTRATION FEE AND SQUARE METRES CONFIRMED

	Sq.m	Trade visitor Tickets
All exhibitors have a right to receive trade visitor ticket according to the sq.m purchased, as follows:	<b>up to 64</b>	<b>100</b>
	<b>from 65 to 128</b>	<b>200</b>
	<b>over 128</b>	<b>300</b>

- (1) **Bare area** rate includes area only, Registration Fee and possible further items must be added. **Turnkey rate** includes fitting, furnishing, carpet, power supply (1 Kw every 16 sq.m until maximum 4 Kw).
- (2) Implementation of increasing safety requirements by the public authorities contribution (metal detectors, extra cost for international VISAs increasing control obligations, more security staff and devices as metal detectors during the exhibition) and music royalties for broadcasting.

Other services available: furnishing and fitting rent, cleaning, translators and hostess staff, loading and unloading items, audio-visual equipment renting etc. These and more other services can be booked after signing the exhibiting proposal.

For further information please visit the website: [www.mirtechexpo.com](http://www.mirtechexpo.com)



23 > 25  
march 2025  
Rimini Expo Centre

ADVERTISING SOLUTIONS FOR MIR – LIVE ENTERTAINMENT EXPO 2025

Dear Exhibitor,

We have pleasure in drawing your attention to some advertising opportunities to enforce your visibility as exhibitor at MIR – LIVE ENTERTAINMENT EXPO 2025.

DESCRIPTION	PRICE LIST
<input type="checkbox"/> 4 COLOR COMPANY LOGO ON VISITORS GUIDE PLAN	€ 1.800
<input type="checkbox"/> BANNER IN THE VISITORS GUIDE PLAN	€ 1.200
<input type="checkbox"/> ADVERTISING ON THE BACK OF VISITORS GUIDE PLAN	€ 3.500
<b>WEBSITE BANNER</b>	
<input type="checkbox"/> Home Page 300 x 100	€ 600
<input type="checkbox"/> Section Visitors 200 x 200	€ 1.000
<input type="checkbox"/> Home Page 300 x 250	€ 1.200
<input type="checkbox"/> INTERNAL STANDS WITH DOUBLE-SIDES BANNERS	€ 810
<input type="checkbox"/> TOTEM INDOOR POOL	€ 5.200
<input type="checkbox"/> GLASS WINDOWS IN PAVILION	€ 1.500
<input type="checkbox"/> GLASS WINDOWS ENTRANCE	€ 2.000
<input type="checkbox"/> REVOLVING DOOR BRANDING	€ 9.000
<input type="checkbox"/> BRANDING OF CONFERENCE ROOMS STAIRS	€ 5.000

VAT must be added to these figures, if due

PLEASE NOTE: The above solutions are just part of a broader range of offers that can be found on the website:

<http://en.mirtechexpo.com/exhibitors/advertising>

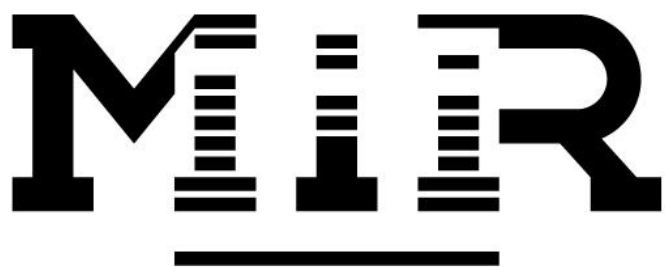
Music Inside Rimini Team are available to examine any other requests not listed in the sales brochure and can also design new solutions tailored to your visibility needs.

Date \_\_\_\_\_

Stamp and signature of the legal representative

# MUS 2025

## GENERAL INFORMATION AND DEADLINES



MULTIMEDIA INTEGRATION EXPO

23 > 25  
march 2025  
Rimini Expo Centre

### IMPORTANT DEADLINES:

AREA BOOKING AND TECHNICAL DATES	REGISTRATION PROCEDURE:	<b>IMPORTANT: sent a copy of the application via e-mail <a href="mailto:expo@iegexpo.it">expo@iegexpo.it</a></b> (For details see Chap. I Art. 2 in Rules and Regulations)
	BALANCE DEADLINE	<b>28 FEBRUARY 2025</b> - Deadline for total balance payment (Chap. II Art. 3 of General Rules & Regulations).
	STAND PLANNING	<b>21 FEBRUARY 2025</b> <b>BARE AREAS:</b> Cut-off date for the <b>presentation of stand fitting &amp; layout design</b> to upload in the section "stand projects" in the reserved area
	SERVICE BOOKING	<b>28 FEBRUARY 2025</b> Cut-off date for the presentation of the forms for ordering services (available in your reserved area on the website <a href="http://my.musicinsiderimini.it">my.musicinsiderimini.it</a> )

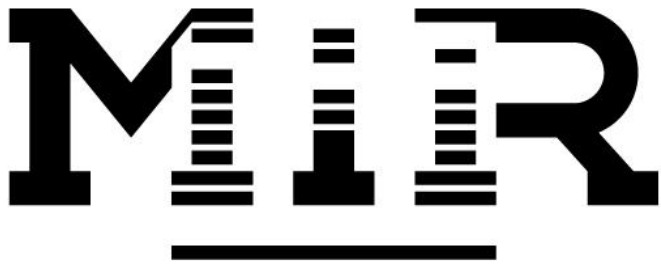
WITHDRAWAL RULES	<b>BY 20 DECEMBER 2024</b>	<i>If the written cancellation reaches the Organizer no later than <b>20 DECEMBER 2024</b>, the penalty will be equal to an amount corresponding to the registration fee</i>
	<b>From 21 DECEMBER 2024 till 21 FEBRUARY 2025</b>	<i>If the written cancellation reaches the Organizer from <b>21 DECEMBER TILL 21 FEBRUARY 2025</b>, the penalty will be equal to an amount corresponding to the deposit as determined in the signed exhibiting proposal</i>
	<b>from 22 FEBRUARY 2025</b>	<i>if the written cancellation reaches the Organizer from the date of <b>22 FEBRUARY 2025</b>, penalty will be equal to an amount corresponding to the entire balance due as determined in the signed exhibiting proposal</i>

### FOR FURTHER INFORMATION:

	SECTOR	TEAM	TEL. +39	EMAIL
Info for exhibitors, exhibiting space sale, advertising spaces in exhibition pavilions, web advertising, catalogue advertising sale	EXHIBITION MANAGER SALES OFFICE	Romina Magnani Roberta Di Bonito	0541 744 468 0541 744 816	romina.magnani@iegexpo.it roberta.dibonito@iegexpo.it
<b>Technical assistance:</b> online reserved area, services request (e-commerce)	TECHNICAL SERVICES Office			exposervices@iegexpo.it
<b>Technical assistance:</b> logistics and planning fitting days, dismantling days, access procedure	GALS Office (logistic, fitting and security)	Andrea Silvagni Roberta Sarti	0541 744 887 0541 744 241	andrea.silvagni@iegexpo.it roberta.sarti@iegexpo.it
<b>Stand Projects approval</b>	OPERATIONS OFFICE	Andrea Silvagni Valentina Serrecchia	0541 744 887 0541 744 818	andrea.silvagni@iegexpo.it valentina.serrecchia@iegexpo.it
<b>Accounting services:</b> deposit payment, balance, invoices, request of invoices	ACCOUNTING DEPARTMENT	Evis Boshku	0541 744 219	evis.boshku@iegexpo.it
		Marilena Ventura	0541 744 611	marilena.ventura@iegexpo.it
Assistance with filling in application forms, company details amendments and assistance with catalogue details	SALES BACK OFFICE	Chiara Colombo Barbara Bertoglio	02 80689205 02 80689201	chiara.colombo@iegexpo.it barbara.bertoglio@iegexpo.it

### WARNING! NOTICES TO EXHIBITING COMPANIES

We hereby inform you that some companies, including "International Fairs Directory", "Mulpor Company Srl," "Oceandatalinks "," Fortune Business Intelligence group inc - fortunebig ", based in different parts of the world and with constantly changing company names, are used to send our exhibiting companies forms in which they request to correct the data of the companies themselves, for the publication of advertisements, in online magazines, improperly using the trademarks of our events, or propose the sale of databases of names of buyers complete with company names, names of internal contacts, their contacts Email, website, addresses, telephone and fax. The companies of the aforementioned type **HAVE NOT BEEN AUTHORIZED BY US** to use our name or the brands connected to us. Therefore, an arbitrary and illegitimate use of the distinctive signs of others is evident, in order to create misunderstandings in the recipients of the aforementioned communications. It is also understood that **Italian Exhibition Group Spa has not communicated or transferred any data of its buyers to the companies that propose the sale of databases of our buyers**. In the event that you receive forms or proposals for the sales of database, also by e-mail, from the companies as specified above, we invite you to pay **MAXIMUM ATTENTION**, taking into account the above.



MULTIMEDIA INTEGRATION EXPO

23 > 25  
march 2025  
Rimini Expo Centre

**A4 STAND TYPE**

**16 SMQ – SIZE 4X4**

**SET UP**

VARNISHED WOOD WALLS H 290 CM  
RED CARPET

- 1 STORAGE ROOM 100X100 CM
- 1 RECTANGULAR TABLE 160X80XH 75 CM
- 3 CHAIRS
- 1 STOOL
- 1 RECEPTION DESK 100X40XH 100 CM
- 1 WASTE BIN
- 1 COAT HANGER

**ELECTRICAL SYSTEM**

- 1 ELECTRICAL BOARD
  - 1 SOCKET 220 V
  - 3 LAMPS
- IN YOUR AREA IS INCLUDED 1KW ELECTRICAL SUPPLY (220 V) WHICH IS ENOUGH FOR STANDARD ELECTRICAL SYSTEM.

**STANDARD GRAPHIC**

STANDARD GRAPHIC 180XH 40 CM SUPPORT SIZE  
BLACK WRITTEN ON WHITE SUPPORT

**OPEN FRONT: 1**



**OPEN FRONTS: 2**

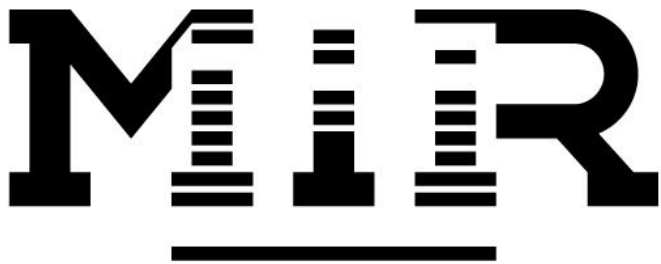


**€ 4.493,20**

**Registration fee is included.**

**SUPPLY GENERAL CONDITIONS**

The exhibitor is accountable for the hired materials until the time of giving them back; he engages himself in covering every eventual burden deriving from the improper use of such material.



MULTIMEDIA INTEGRATION EXPO

23 > 25  
march 2025  
Rimini Expo Centre

**A4 STAND TYPE**

**32 SMQ – SIZE 8X4**

**SET UP**

VARNISHED WOOD WALLS H 290 CM  
RED CARPET

- 1 STORAGE ROOM 200X100 CM
- 2 RECTANGULAR TABLE 160X80XH 75 CM
- 6 CHAIRS
- 2 STOOL
- 2 RECEPTION DESK 100X40XH 100 CM
- 1 WASTE BIN
- 1 COAT HANGER

**ELECTRICAL SYSTEM**

- 1 ELECTRICAL BOARD
  - 2 SOCKET 220 V
  - 6 LAMPS
- IN YOUR AREA ARE INCLUDED 2KW ELECTRICAL SUPPLY (220 V)  
WHICH IS ENOUGH FOR STANDARD ELECTRICAL SYSTEM.

**STANDARD GRAPHIC**

STANDARD GRAPHIC 180XH 40 CM SUPPORT SIZE  
BLACK WRITTEN ON WHITE SUPPORT

**OPEN FRONT: 1**



**OPEN FRONTS: 2**

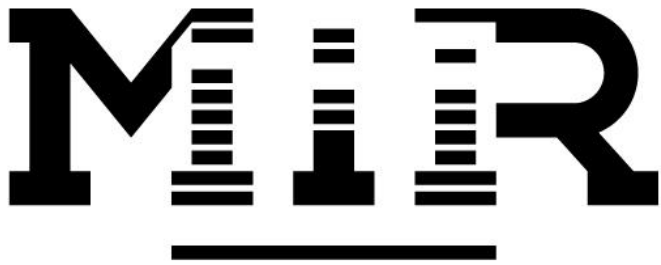


**€ 8.236,40**

Registration fee is included.

**SUPPLY GENERAL CONDITIONS**

The exhibitor is accountable for the hired materials until the time of giving them back; he engages himself in covering every eventual burden deriving from the improper use of such material.



MULTIMEDIA INTEGRATION EXPO

23 > 25  
march 2025  
Rimini Expo Centre

**G STAND TYPE**

**16 SMQ – SIZE 4X4**

**SET UP**

VARNISHED WOOD WALLS H 290 CM  
CARIBBEAN BLUE CARPET

1 STORAGE ROOM 100X100 CM  
1 RECTANGULAR TABLE 160X80XH 75 CM  
3 CHAIRS  
1 STOOL  
1 RECEPTION DESK 100X40XH 100 CM  
1 WASTE BIN  
1 COAT HANGER

**ELECTRICAL SYSTEM**

1 ELECTRICAL BOARD  
1 SOCKET 220 V  
3 LAMPS  
IN YOUR AREA IS INCLUDED 1KW ELECTRICAL SUPPLY (220 V) WHICH IS ENOUGH FOR STANDARD ELECTRICAL SYSTEM.

**STANDARD GRAPHIC**

STANDARD GRAPHIC 180XH 40 CM SUPPORT SIZE  
BLACK WRITTEN ON WHITE SUPPORT

**OPEN FRONT: 1**



**OPEN FRONTS: 2**

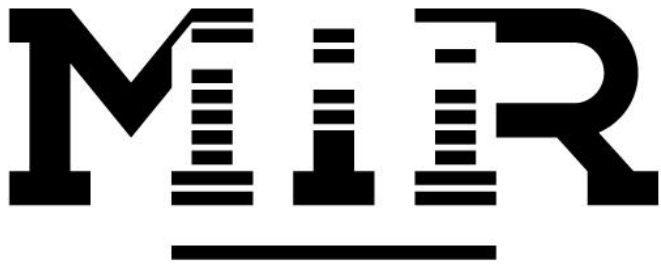


**€ 4.717,20**

Registration fee is included.

**SUPPLY GENERAL CONDITIONS**

The exhibitor is accountable for the hired materials until the time of giving them back; he engages himself in covering every eventual burden deriving from the improper use of such material.



MULTIMEDIA INTEGRATION EXPO

23 > 25  
march 2025  
Rimini Expo Centre

**G STAND TYPE**

**32 SMQ – SIZE 8X4**

**SET UP**

VARNISHED WOOD WALLS H 290 CM  
CARIBBEAN BLUE CARPET

- 1 STORAGE ROOM 200X100 CM
- 2 RECTANGULAR TABLE 160X80XH 75 CM
- 6 CHAIRS
- 2 STOOL
- 2 RECEPTION DESK 100X40XH 100 CM
- 1 WASTE BIN
- 1 COAT HANGER

**ELECTRICAL SYSTEM**

1 ELECTRICAL BOARD  
2 SOCKET 220 V  
6 LAMPS  
IN YOUR AREA ARE INCLUDED 2KW ELECTRICAL SUPPLY (220 V) WHICH IS ENOUGH FOR STANDARD ELECTRICAL SYSTEM.

**STANDARD GRAPHIC**

STANDARD GRAPHIC 180XH 40 CM SUPPORT SIZE  
BLACK WRITTEN ON WHITE SUPPORT

**OPEN FRONT: 1**



**OPEN FRONTS: 2**

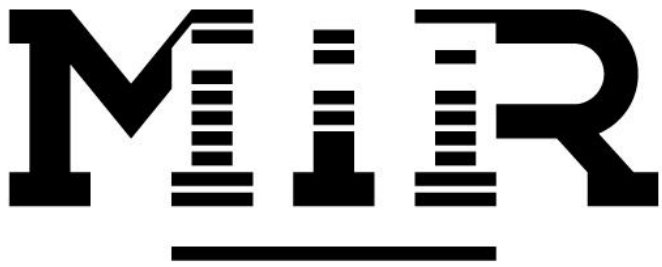


**€ 8.684,40**

Registration fee is included.

**SUPPLY GENERAL CONDITIONS**

The exhibitor is accountable for the hired materials until the time of giving them back; he engages himself in covering every eventual burden deriving from the improper use of such material.



MULTIMEDIA INTEGRATION EXPO

23 > 25  
march 2025  
Rimini Expo Centre

**F STAND TYPE**

**16 SMQ – SIZE 4X4**

**SET UP**

VARNISHED WOOD WALLS H 290 CM  
WOOD STAVES STRUCTURE  
RED CARPET

- 1 STORAGE ROOM 100X100 CM
- 1 RECTANGULAR TABLE 160X80XH 75 CM
- 3 CHAIRS
- 1 STOOL
- 1 RECEPTION DESK 100X40XH 100 CM
- 1 WASTE BIN
- 1 COAT HANGER

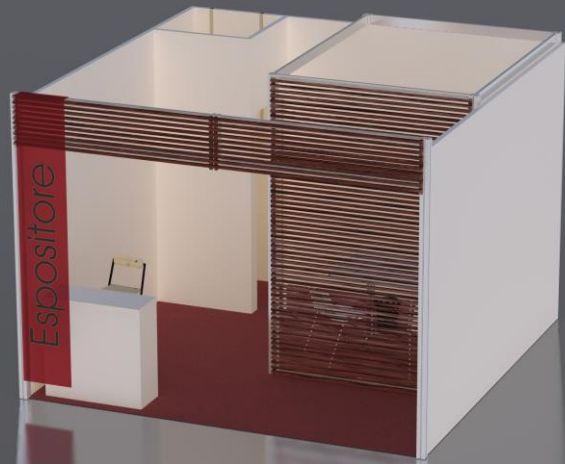
**ELECTRICAL SYSTEM**

- 1 ELECTRICAL BOARD
  - 1 SOCKET 220 V
  - 3 LAMPS
- IN YOUR AREA IS INCLUDED 1KW ELECTRICAL SUPPLY (220 V) WHICH IS ENOUGH FOR STANDARD ELECTRICAL SYSTEM.

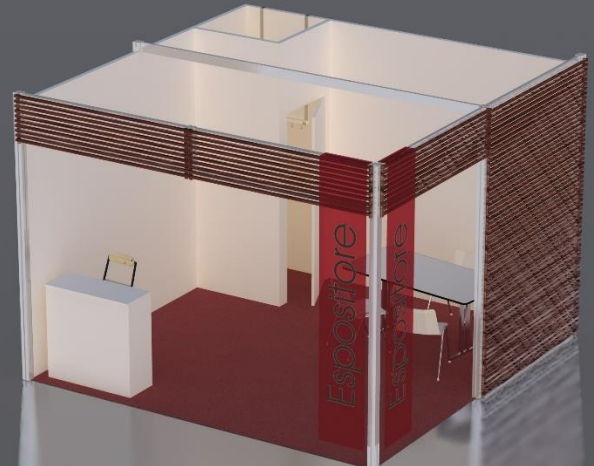
**STANDARD GRAPHIC**

PRINTED FLAG WITH COMPANY NAME 50XH 290 CM

**OPEN FRONT: 1**



**OPEN FRONTS: 2**



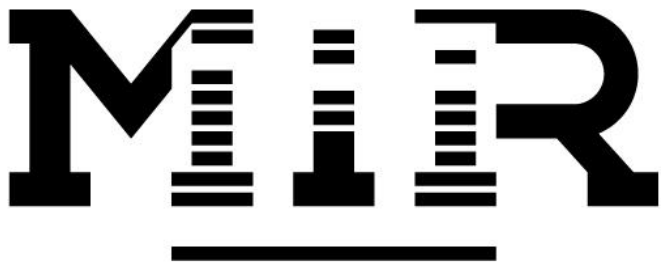
**€ 5.133,20**

Registration fee is included.

**SUPPLY GENERAL CONDITIONS**

The exhibitor is accountable for the hired materials until the time of giving them back; he engages himself in covering every eventual burden deriving from the improper use of such material.





MULTIMEDIA INTEGRATION EXPO

23 > 25  
march 2025  
Rimini Expo Centre

**F STAND TYPE**

**32 SMQ – SIZE 8X4**

**SET UP**

VARNISHED WOOD WALLS H 290 CM  
WOOD STAVES STRUCTURE  
RED CARPET

1 STORAGE ROOM 200X100 CM  
2 RECTANGULAR TABLE 160X80XH 75 CM  
6 CHAIRS  
2 STOOL  
2 RECEPTION DESK 100X40XH 100 CM  
1 WASTE BIN  
1 COAT HANGER

**ELECTRICAL SYSTEM**

1 ELECTRICAL BOARD  
2 SOCKET 220 V  
6 LAMPS  
IN YOUR AREA ARE INCLUDED 2KW ELECTRICAL SUPPLY (220 V)  
WHICH IS ENOUGH FOR STANDARD ELECTRICAL SYSTEM.

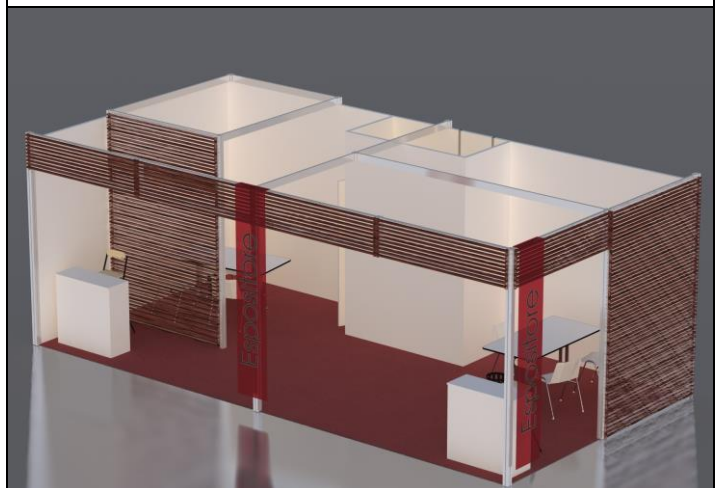
**STANDARD GRAPHIC**

PRINTED FLAG WITH COMPANY NAME 50XH 290 CM

**OPEN FRONT: 1**



**OPEN FRONTS: 2**



**€ 9.516,40**

Registration fee is included.

**SUPPLY GENERAL CONDITIONS**

The exhibitor is accountable for the hired materials until the time of giving them back; he engages himself in covering every eventual burden deriving from the improper use of such material.